

Havelock Primary School, Nursery & ARP Newsletter



Friday 13th January 2023

Dear Parents and Carers,

Retirement of our Headteacher, Dr Rees

After many years in education, our Headteacher, Dr Rees will retire at the end of the academic year. We are extremely saddened by this news for our school community but wish Dr Rees all the best. Please look at the letter overleaf that all children received today.

Spring Term

It is wonderful to see everyone back in the New Year and after the December holiday. We are excited about the new term and all the upcoming activities.

Parent Curriculum Meetings

Parent Curriculum Meetings will take place the week beginning 16th January. Please ensure you speak to your child and their teacher so you know when the meeting will take place and can attend. Teachers will explain the learning and topics taught in the Spring term, as well as strategies that can support your children.

Test weeks

Please speak to your child and their class teacher about upcoming test weeks and assessments. Children can create a revision timetable at home to support their learning and ensure they do their very best.

Important Dates

Parent Curriculum Meetings – Week beginning 16th January

Half term – From Monday 13th February to Friday 17th February 2023

Have a great weekend.

Kind regards,

Ms. Naz Abaeian and Mr. Jon Bailey

Heads of school



Follow us on Twitter
for updates on all things Havelock



@HavelockPrimary

***We are a growth mindset school. Our job is to challenge our pupils
and let them thrive.***

Havelock Primary School, Nursery & ARP Newsletter



13.01.2023

Dear Parents and Carers,

I am writing to inform you that after nearly 4 decades in education, I have taken the difficult decision to retire from my role as headteacher at Havelock Primary school at the end of the academic year.

It is time for me to spend more time with my family and grandchildren, whilst also pursuing the things I am passionate about; evidence based approaches in educational leadership and learning. I will continue in my part time role as the primary lead of the Ealing Learning Partnership.

Leading Havelock has been a huge honour and a privilege, and a large part of that is down to the wonderful families that we serve and the incredibly hardworking staff that work at our school. Your children are the reason I get up every work day and they make this school such a pleasure to lead.

The next step is to secure the future leadership of the school, so that it can continue to go from strength to strength.

Michael Kelleher, The Chair of governors, will inform parents of the recruitment of a new headteacher in due course.

Thank you for your continuing support.

With best wishes

A handwritten signature in blue ink, appearing to read 'C Rees'.

Dr Clare Rees

***We are a growth mindset school. Our job is to challenge our pupils
and let them thrive.***

Havelock Primary School, Nursery & ARP Newsletter



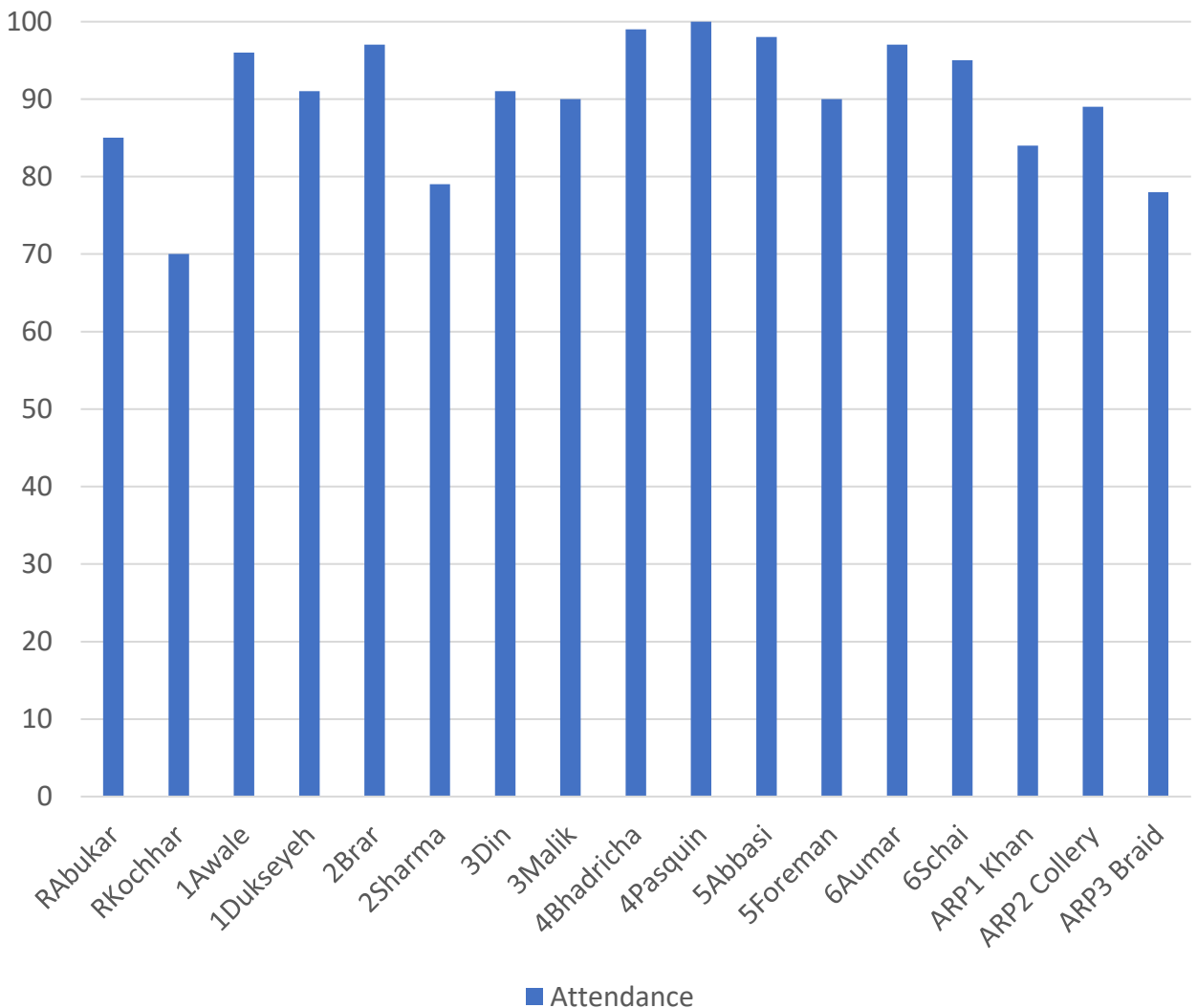
Attendance at Havelock

Remember, good attendance is over 96%! Below are the figures for this week for all classes.

Congratulations to:

4Pasquin Class

for their attendance of **100%**! Well done!



***We are a growth mindset school. Our job is to challenge our pupils
and let them thrive.***

Havelock is a Rights Respecting School



Article 12 says that every child has the right to express their views freely and that their views should be taken into account when decisions are made.

Article 12 (respect for the views of the child)

Every child has the right to express their views, feelings and wishes in all matters affecting them, and to have their views considered and taken seriously. This right applies at all times, for example during immigration proceedings, housing decisions or the child's day-to-day home life.

How does it feel when you know you are being listened to and your views are respected?



We are a growth mindset school. Our job is to challenge our pupils and let them thrive.

Havelock Primary School, Nursery & ARP Newsletter



Havelock Primary's 5Rs – Y3

Be Resourceful Build Relationships Be Resilient

Be Reflective Be Responsible

This week Year 3 have worked hard at being resourceful in the classroom. They have used their prior learning to help them build on their new learning in their maths lessons. They are able to use working walls to recall learning as well as using concrete resources. They are confident in knowing what mathematical resources they need to use to grasp concepts.



***We are a growth mindset school. Our job is to challenge our pupils
and let them thrive.***



Phonics Page

As a school, we teach how to read and become a fluent reader by teaching the Read, Write, Inc programme.

This week's video is all about reading the stretchy sounds with your child.

Please watch the first of many parent videos using the QR code or link below:

[Click here to watch the video](#)



*We are a growth mindset school. Our job is to challenge our pupils
and let them thrive.*



Idiom of the Week

An idiom is an expression with a different meaning than its literal one, e.g. if something is hard to find you may say it's like trying to find a needle in a haystack.

Every week, watch this page for the idiom of the week.

Be a fly on the wall

MEANING:

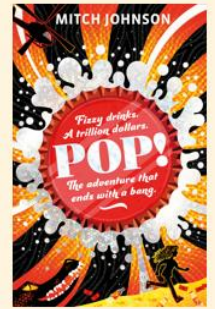
To watch something happen without anyone knowing you're there

EXAMPLE:

Nico wished he could be a fly on the wall when his sister discovered the toad he'd left in her shoe!

Havelock Author of the Week

MITCH JOHNSON



Mitch's novel 'Kick' won the 2018 Branford Boase Award.

Did you know that Mitch Johnson works in Waterstones in Norwich and writes children's books in his spare time?

Mitch's books are unique in their own way however they all have strong, optimistic lead characters. Each book will make you think more about wider global issues such as climate change, the power of big corporations and the reality of other's lives. Mitch's books are thought-provoking, moving and entertaining to read.

Mitch Johnson says:

If you like Christopher Edge or Alastair Chisholm you'll love these books!

Reading is one of the most exciting, adventurous, rebellious things you can do. A shelf full of books is like a corridor lined with unmarked doors that open into other worlds; the only way to find out where they lead is to open them up and step inside!

We are a growth mindset school. Our job is to challenge our pupils and let them thrive.



Maths at Havelock – Year 2

Year two pupils have been learning about how to use the column method for addition and subtraction. They had to draw upon their knowledge of place value to ensure they lined up their number accurately. Have a look below at how the children have challenged themselves with their learning.

WATI: Add digit numbers using column method.

5 a day

- $25 + 43 = 68$ ✓
- $53 - 12 = 41$ ✓
- $20 \times 12 = 240$ ✓
- $24 \div 2 = 12$ ✓
- $\frac{1}{2}$ of 12 = 6 ✓

T O ✓	T O	T O	T O
27	26	57	28
+ 35	+ 36	+ 23	+ 45
12	12	10	13
+ 30	+ 50	+ 70	+ 50
42 ✓	62 ✓	80 ✓	63 ✓

P: Garvesh needs to add the tens which is 57 + 10

E:

T O
71
+ 19
20
+ 80
90

E: Once Garvesh had added the tens number he could complete the sum.

T O

28
- 4
24

24 cupcakes were left.

10.1.23

WATI: subtract a 1 digit number from a 2 digit number with renaming.

5 a day

- $47 + 37 = 84$ ✓
- $62 - 22 = 40$ ✓
- $5 \times 6 = 30$ ✓
- $70 \div 10 = 7$ ✓
- $\frac{1}{2}$ of 6 = 3 ✓

T O	T O	T O	T O
128	24	58	47
- 6	- 7	- 9	- 9
26 ✓	71 ✓	49 ✓	35 ✓

P: Melaa made a mistake.

E:

T O
23
- 6
17



Maths at Havelock – Year 5

In maths, Year 5 have focused their learning on calculating and measuring the area of compound shapes. The pupils had to be resourceful in their learning by using visual models and worked examples to refer to when they became stuck. Have a look at some of their wonderful work below!

Reflection - Today we measured area. The area is the space inside the shape. I could practice.

11/1/23

20 To calculate and measure the area of compound shapes

5 q day

1) $2167 + 1285 = 1501$ ✓

2) $524 - 77 = 447$ ✓

3) 240 ✓

4) $776 + 876 = 1518$ ✓

5) $78 = 30$ ✓

6) 6 ✓

1) 72 cm^2

b) 55 cm^2

2) $3 \times 6 = 18 \text{ cm}^2$
 $8 \times 2 = 16 \text{ cm}^2$
 Area = 34 cm^2

b) $4 \times 12 = 48 \text{ cm}^2$
 $8 \times 8 = 64 \text{ cm}^2$
 Area = 112 cm^2

3) 95 cm^2

4) *Billy is incorrect. I know this because the total area is 382 cm^2 but she said it is 65 cm^2 . Therefore she is wrong as it is 382 cm^2 not 65 cm^2 .*

11/01/23

20 To calculate and measure the area of compound shapes.

1) $1285 + 216 = 1501$ ✓

2) $524 - 77 = 447$ ✓

3) $4 \times 6 \times 10 = 240$ ✓

4) 876 ✓

1) 72 cm^2 ✓ 55 cm^2 ✓ 112 cm^2 ✓

3) $8 \times 7 = 56$ $3 \times 5 = 15$ $3 \times 5 = 15$ $1 \times 8 = 8$

4) 230 *15 is wrong because when I did $15 \times 18 = 90$ and $282 = 12$ So 15 is wrong.*

A
 $6 \times 5 = 30 \text{ cm}^2$

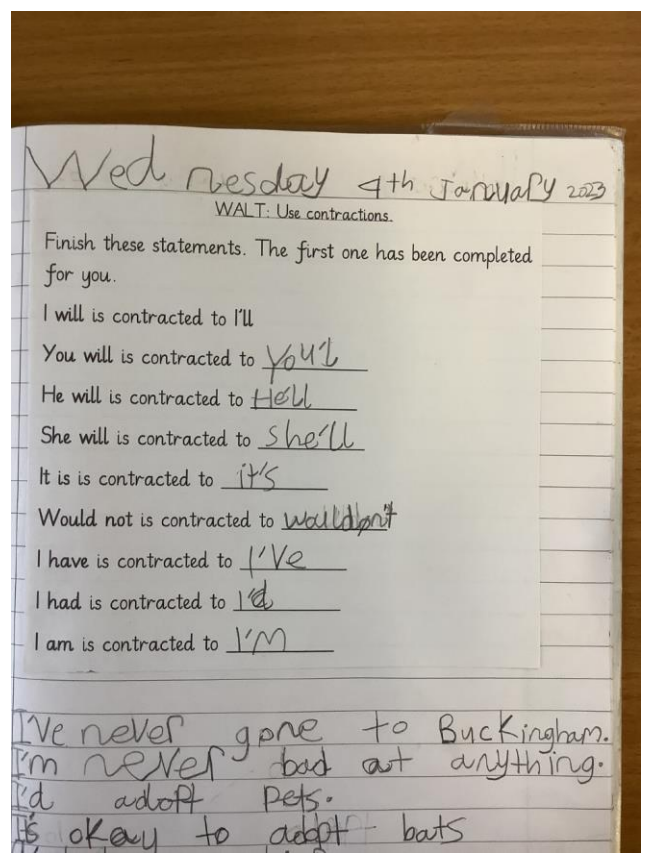
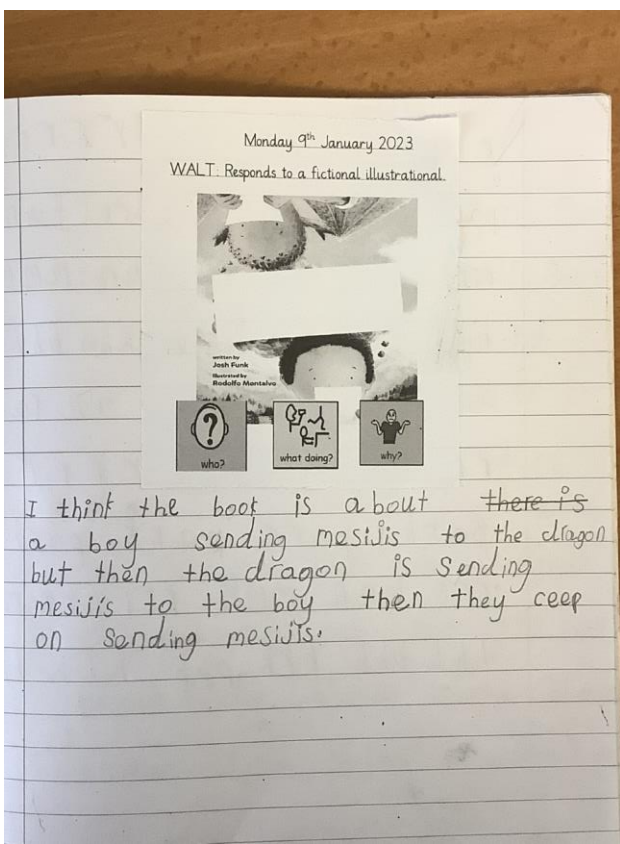
B
 $2 \times 8 = 16 \text{ cm}^2$

We are a growth mindset school. Our job is to challenge our pupils and let them thrive.



English at Havelock – Year 1

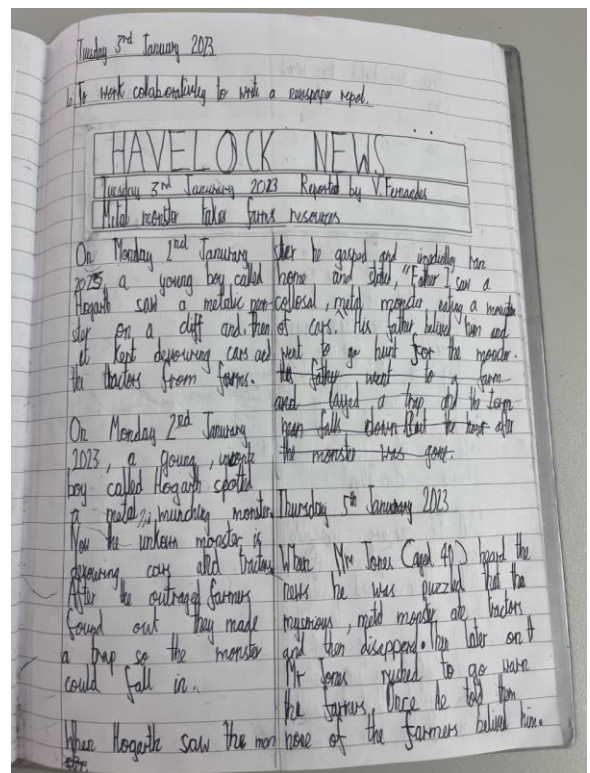
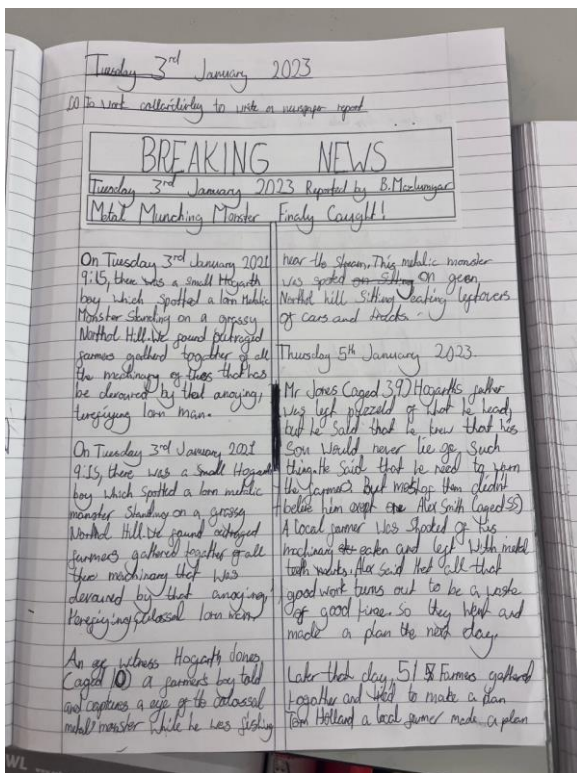
In year 1, children have been looking at the features of informal writing. Last week they learnt how to use contraction words. Soon the children will be writing an informal letter response to a character from their new story: Dear Dragon.





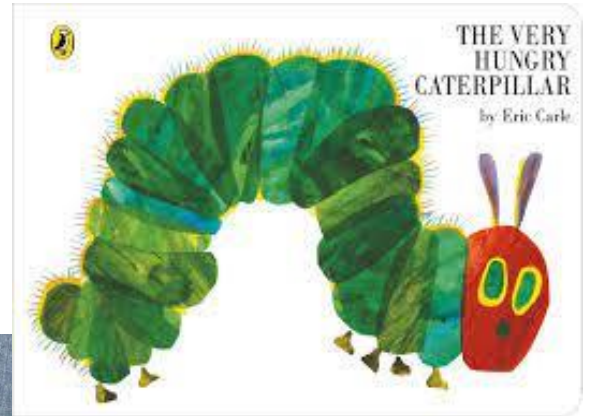
English at Havelock – Year 4

In English, Year 4 have been writing a newspaper report on their text 'Iron Man.' The children have used a range of features including formal language, direct and indirect speech as well as facts and opinions. Some pupils also used alliteration in their headlines to make them stand out. Have a look at some of their amazing work below.



EYFS at Havelock - Nursery

This term, early years will be learning about 'minibeasts' for their topic. Nursery have been learning about the life cycle of a butterfly. The children can make links in their learning with the literacy book 'The very hungry caterpillar.' They have been learning scientific vocabulary such as 'cocoon,' 'egg,' 'life-cycle.' The children can describe and create their own life cycle.

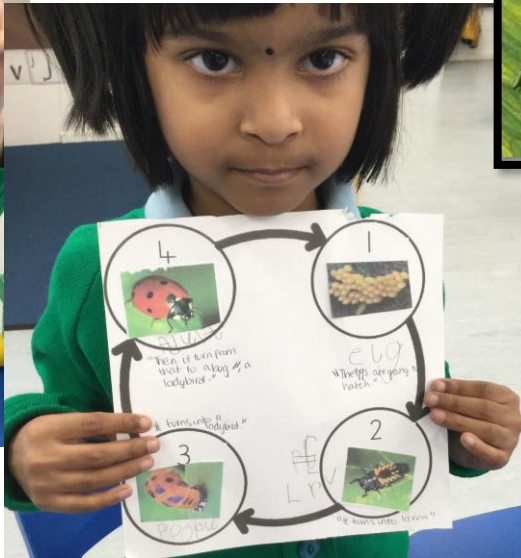
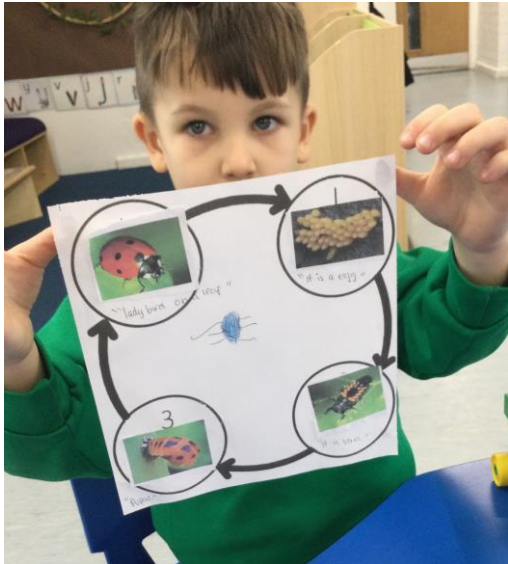
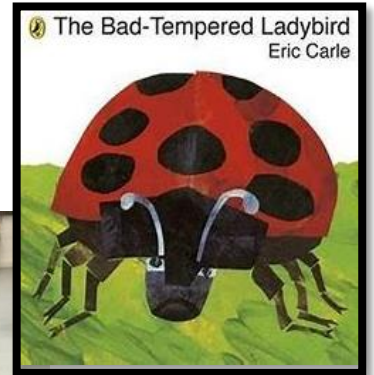


***We are a growth mindset school. Our job is to challenge our pupils
and let them thrive.***



EYFS at Havelock - Reception

Reception have been learning about the life cycle of a ladybird. They have been exploring a range of fiction and non-fiction texts related to minibeasts. They listened to 'The Bad-Tempered Ladybird' by Eric Carle.



They have been practising to describe the life cycle using scientific vocabulary such as 'larva' and 'pupa.' They have been sequencing the pictures in the correct order, numbering the pictures, writing initial sounds or words using their phonics knowledge and speaking in full sentences to describe the cycle.

***We are a growth mindset school. Our job is to challenge our pupils
and let them thrive.***



Havelock ARP

In English, ARP1 have been learning about the story 'The Very Hungry Caterpillar.' They were sorting foods the caterpillar ate and did not eat. In maths, children have been learning about doubling.



This week ARP2 and ARP3 have been learning about musical instruments and telling stories through music with the help of Mozartists.



***We are a growth mindset school. Our job is to challenge our pupils
and let them thrive.***

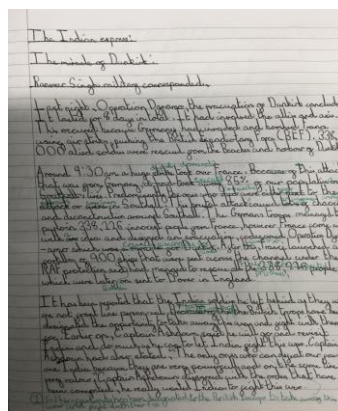
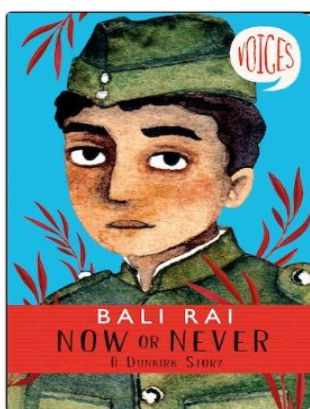
Havelock Primary School, Nursery & ARP Newsletter



Class Assembly It was 6Schai's assembly.

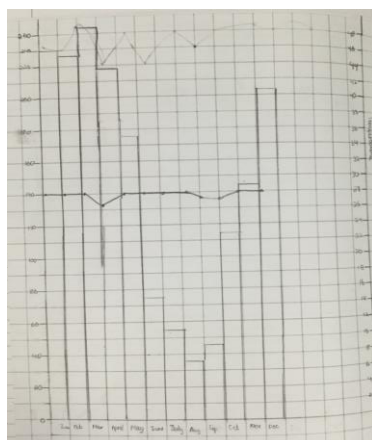
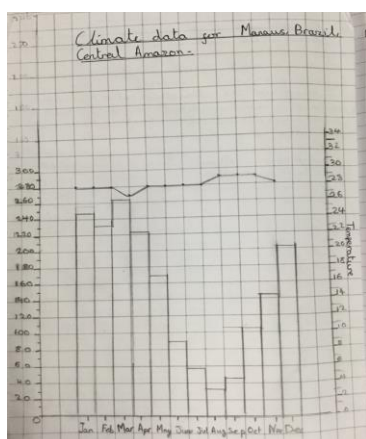
English:

Year 6 have been reading a text called Now or Never: A Dunkirk Story. This book was about World War 2 and pupils went onto write a newspaper report and a recount about Operation dynamo.



Geography:

In year 6, the big question was, 'What makes North and South America so unique?' They compared the climate of North and South America using a graph. They also had a debate about whether deforestation should continue.



Wednesday 7th December 2021

To compare the climate of North and South America

The analysis so far shows many different types of maps. North America and then are many of different temperatures. At North America the temperature is colder than the cities near the equator make those specific hotter than you example Canada. The temperature needs to nearly as North America would be more in regular than past.

South America is in a high location which is near the equator. The temperature is most likely above 30°. South America is hot because the cities are closer to the equator. London is hotter than Argentina because London is closer to the equator, whereas Argentina is further away from the equator. The cities are warmer because of the cities are near the equator. The cities are warmer because of the cities are near the equator.

**We are a growth mindset school. Our job is to challenge our pupils
and let them thrive.**

Havelock Primary School, Nursery & ARP Newsletter



Circle

Circle is a hub space and crisis cafe that will offer support for young people aged 5-18 in Ealing and Hounslow who are near, or at crisis point with their mental health. A mental health crisis is when you feel at breaking point, and need urgent help.

Appointments by referrals

Monday to Friday - 6:30PM to 10:00PM
Saturday and Sunday - 3:30PM to 7:00PM

Drop in hours:

Monday to Friday - 3:30PM to 6:00PM
Saturday and Sunday - 12:30PM to 3:00PM

Tel: 02034750060
Email: circlereferrals@hfehmind.org.uk

Tel: 02034750060
email: dutyouthservices@hfehmind.org.uk
hfehmind.org.uk
Charity no. 801259

Scan here for
our website !



In Partnership with North
West London CAMHS
Provider Collaborative

 mind Hammersmith, Fulham, Ealing and Hounslow

Email: Eman Shah, Acting Manager of the Circle
eman.shah@hfehmind.org.uk

*We are a growth mindset school. Our job is to challenge our pupils
and let them thrive.*

Havelock Primary School, Nursery & ARP Newsletter



SOUTHALL ACTIVE TRAVEL CONSULTATION NOW OPEN!

What travel barriers do you face around Southall?
Fill the survey and give your views.
Your input will affect change!

ਆਪਣੇ ਵਿਚਾਰ ਦਿਓ

ਪਾਛਾਭੁ ਗੇਪਠੁਆਛਕਠਾ!

ਤਮਾਰੋ ਅਠਿਪ੍ਰਾਯ ਓ!

ਅਠਠ ਗ੍ਰਹਠ ਕਰਠਨ!



SCAN HERE

ਅਪਨਾ ਸੁਝਾਠ ਢੀਠੀਯੋ

Ka qayb qaado!

احصه لیں!

#Bethemovement

✉ activity@accteams.uk

☎ 07971 988910

📌 @LetsGoSouthall

📷 @GoSouthall

*We are a growth mindset school. Our job is to challenge our pupils
and let them thrive.*

Havelock Primary School, Nursery & ARP Newsletter



Let's go Southall

Ealing
www.ealing.gov.uk

Active Communities Team

SOUTHALL ACTIVE TRAVEL CONSULTATION NOW OPEN!

- 01 MERRICK ROAD BRIDGE OPENING
01.12.2022
9:00 -10:30AM
- 02 ONLINE WORKSHOP
14.12.2022
6:00PM
- 03 1ST WORKSHOP
MANOR HOUSE
17.12.2022 @ 10:00 AM - 1:00 PM
- 04 1ST POP UP
SOUTHALL STATION
20.12.2022 @ 5:00 -7:00PM
- 05 BUSINESS ENGAGEMENT
09.01.2023-13.01.2023
- 06 2ND POP UP
SOUTHALL BROADWAY
(NEAR BARCLAYS BANK)
11.01.2023 @ 12:00 -3:00PM
- 07 2ND WORKSHOP
MANOR HOUSE
14.01.2023 @ 10:00AM -1:00PM

Wider Pavements
Safer & Cleaner Streets
Cycle Lanes
Reduced Traffic

Share your views on how to shape better Active Travel in Southall.

Join us at any of the events in January'23.

Your views are important for the right change.

activity@accteams.uk 07971 988910 @LetsGoSouthall @GoSouthall

We are a growth mindset school. Our job is to challenge our pupils and let them thrive.

Havelock Primary School, Nursery & ARP Newsletter



Ealing Mainstream Universal Speech and Language Therapy Team



Maddy Burnett



Lucy Flaherty



Emily Ball

What we do:

We provide a universal speech and language therapy service to families of children over 5 in Ealing. Children do not need a referral to access our service. We provide:

- Workshops for parents
- Training for practitioners
- Student workshops on Speech and Language Therapy as a career
- Information and advice via social media platforms and an advice line service

Did you know?

10% of children have long-term communication needs - that's 2-3 children in every classroom

Good spoken language skills are strong predictors of later academic success.

Relationships: Language and social interaction play a key role in all children's social development.

To contact our team:

Address:

Speech and Language Therapy Team,
Mainstream Schools Universal Service,
Carmelita House, 21-22 The Mall, W5 2PJ

Tel: 0300 1234 544

Facebook: www.facebook.com/SLTEaling

Advice line: call on 07512 716 478 or email on ealing.sltadvice@nhs.net.

We are open Monday – Friday 1-4pm

We need your help! Please scan this QR code to give us feedback on your experiences with Ealing Speech and Language Therapy's Universal service



You can also complete the survey by clicking on this link
<https://www.surveymonkey.co.uk/r/XPTK5L3>

We are a growth mindset school. Our job is to challenge our pupils and let them thrive.

Havelock Primary School, Nursery & ARP Newsletter



NHS
Ealing Community
Partners



Ealing Speech and Language Therapy Over 5's Parent Workshops

Are you a parent of a school-aged child looking for practical advice?

We are running a workshop on:

The Pronunciation of Speech Sounds
Thursday 26th January

11-12pm
Via Zoom



On this workshop you will learn:

- ✓ What 'speech' is and how it develops
- ✓ What speech difficulties sound like (does my child need help)
- ✓ Practical activities and tips to help children speak clearly

PARENTS: to book a **FREE** place:

Email wlm-tr.sltuniversalservices@nhs.net with your name and the name of the workshop

or

Call [07512 716 478](tel:07512716478) between 1-4pm on Monday-Friday
(Please leave a message with your name and telephone number)

Our workshop is free and accessible **via zoom!**

***We are a growth mindset school. Our job is to challenge our pupils
and let them thrive.***

Havelock Primary School, Nursery & ARP Newsletter



contact For families
with disabled children

NHS
Ealing Community
Partners

Autism Group

Understanding behaviour and emotions

Parent workshop

Every day strategies to support children with
behaviour and emotions

Run online via Zoom

by Contact & Ealing Speech and
Language Therapy Universal team

WHEN: TUESDAY 17TH JANUARY 2023
TIME: 10:00AM-11:30AM

To book a place use the link:
<https://forms.office.com/r/rBaZSs37CD>

Parents that are registered and not registered
with Contact are welcome.



***We are a growth mindset school. Our job is to challenge our pupils
and let them thrive.***

Havelock Primary School, Nursery & ARP Newsletter



FREE
online parenting workshop

Domestic Abuse and the impact on children & young people

Increase your knowledge of how to recognise domestic abuse



Develop an understanding of how to recognise the impact/effects of domestic abuse on children & young people



Learn how domestic abuse can impact on parenting



Gain knowledge and awareness of local support services



10AM - 12PM
TUESDAY 24TH
JANUARY 2023
VIA MS TEAMS

Have your questions answered in a confidential space

delivered by Pat Chapman
SAFE family safety worker
- domestic abuse

email parentingserviceadmin@ealing.gov.uk to register or for more info



**SUPPORTIVE
ACTION FOR
FAMILIES IN
EALING**



**EALING
PARENTING
SERVICE**

*We are a growth mindset school. Our job is to challenge our pupils
and let them thrive.*

Havelock Primary School, Nursery & ARP Newsletter



In partnership with



Register at <https://www.eventbrite.co.uk/e/507737505547>

The Great Winter Canal Get Together



SUPPORTED BY
MAYOR OF LONDON

10am - 2pm Monday 16 January 2023

Canalside @ Havelock Green Space, Havelock Road / Isambard Road Junction, Southall, UB2 4QA (what three words ///shrimp.waddle.hang)

Come and join us on 'Blue Monday' for some tea & cake, short walks and boat trips on the Grand Union Canal. We will be running hourly walks and canal boat trips along the Grand Union Canal as part of The Great Get Together. You can come by yourself or with friends or family but please register to secure your seat on one of our free boat trips.

Find out how being by and on the water has a positive impact on your wellbeing. You can also find out about The Southall Wellbeing Way, volunteering and local activities.

Please register using the QR code or via Eventbrite.



***We are a growth mindset school. Our job is to challenge our pupils
and let them thrive.***